

Please read the Template carefully before drilling and mortising the door.

Template/ Lock/Face

Backset 2" (51mm)

Backset 2-1/2" (64mm)

Backset 2-3/4" (70mm)

Backset 3-1/2" (90mm)

Line up/vertical on door Face

Template/ Edge

Screw hole

Installation Template
For Series A500, A600, A700, A900 Mortise Lock
 Template No. A600 - LH

Cylinder Hole

Drill only if you have cylinder on this side of door

Dia 1.25" (32mm)

KK,LL,HH,HK,HL

Thumb Turn Hole

Drill only if you have T. Turn on this side of door

Dia 0.625" (16mm)

KK,LL,HH,HK,HL

Lever/Knob Hole

Drill all the way through door

Dia 0.625" (16mm)

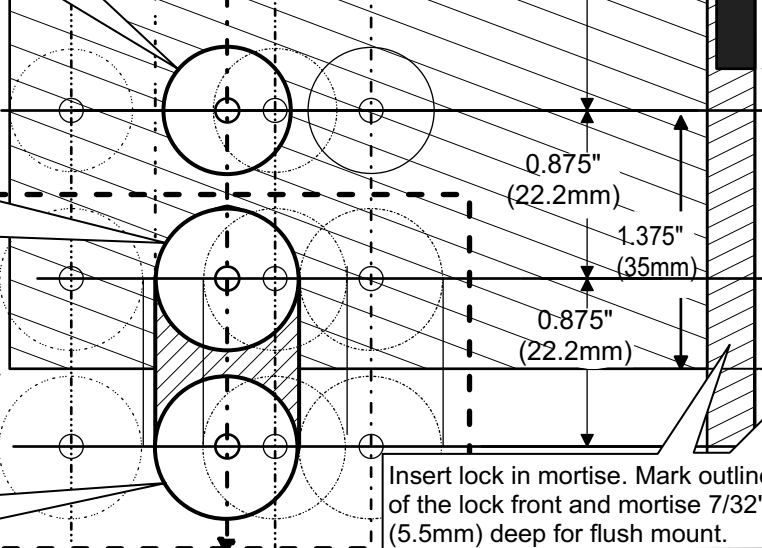
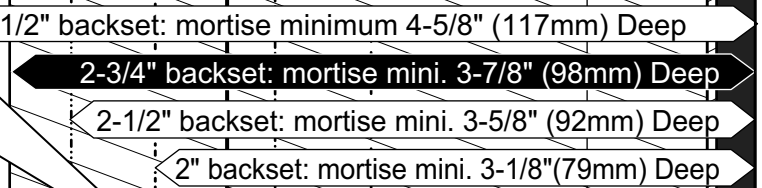
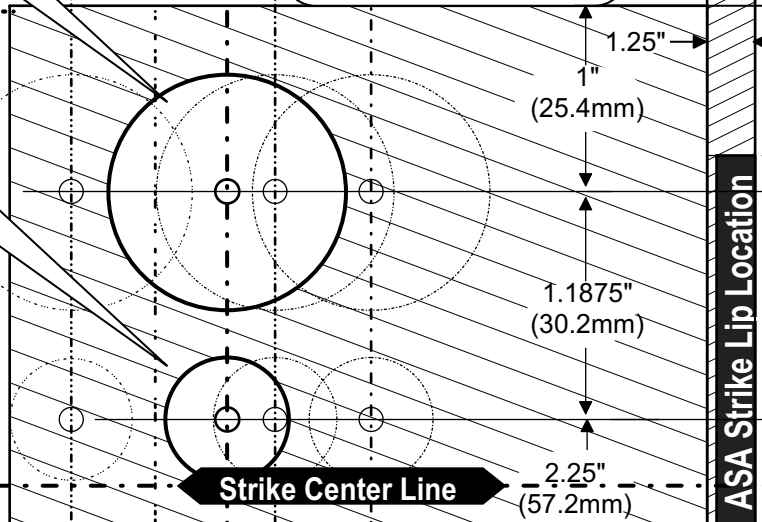
KK,LL,HH,HK,HL

Thumb Piece/ Handle Hole

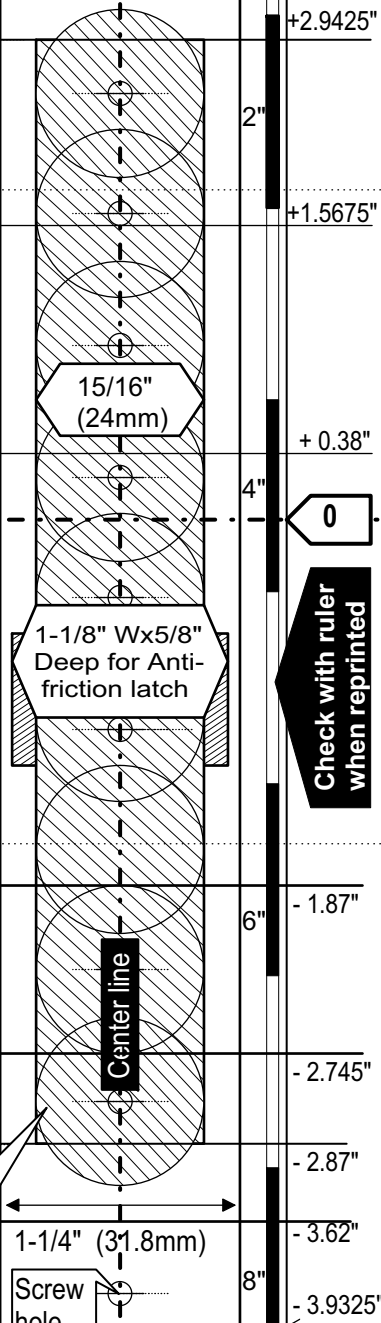
Drill / cut only if you have a Grip Handle Trim either side. Drill all the way through.

Dia 0.875" (22mm)

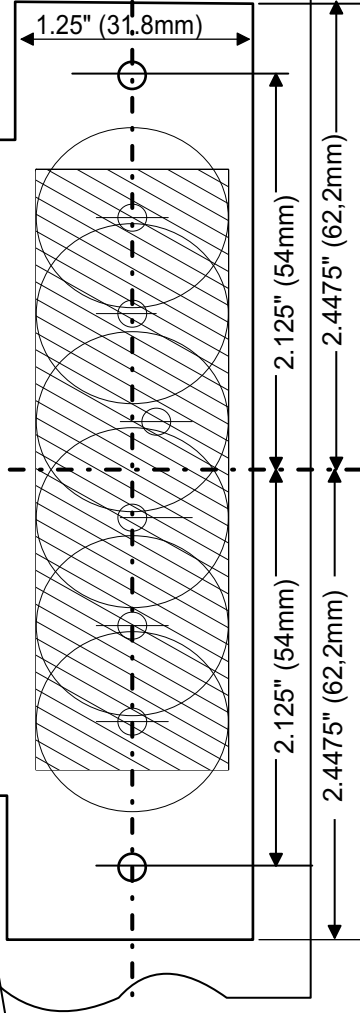
HH,HK,HL



ASA Strike Lip Location



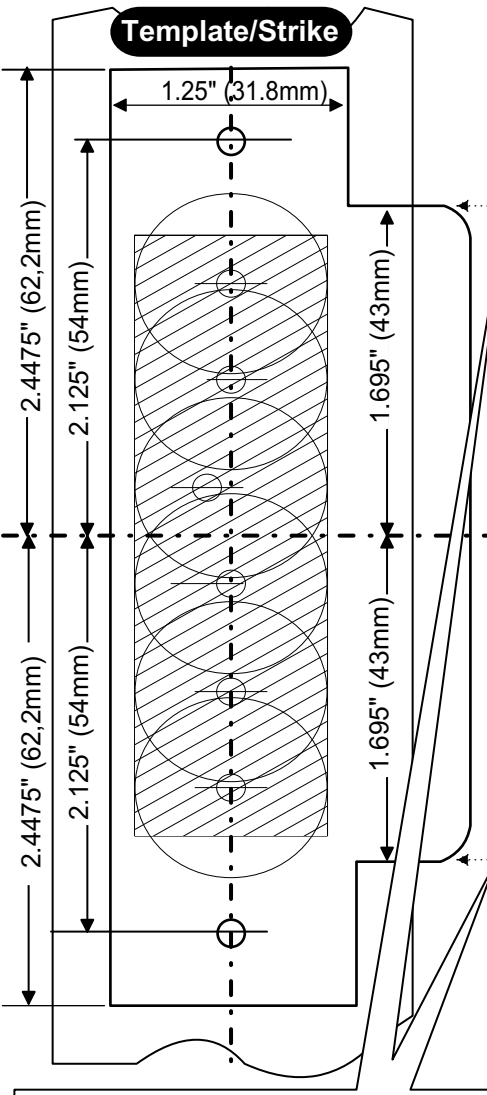
Template/Strike



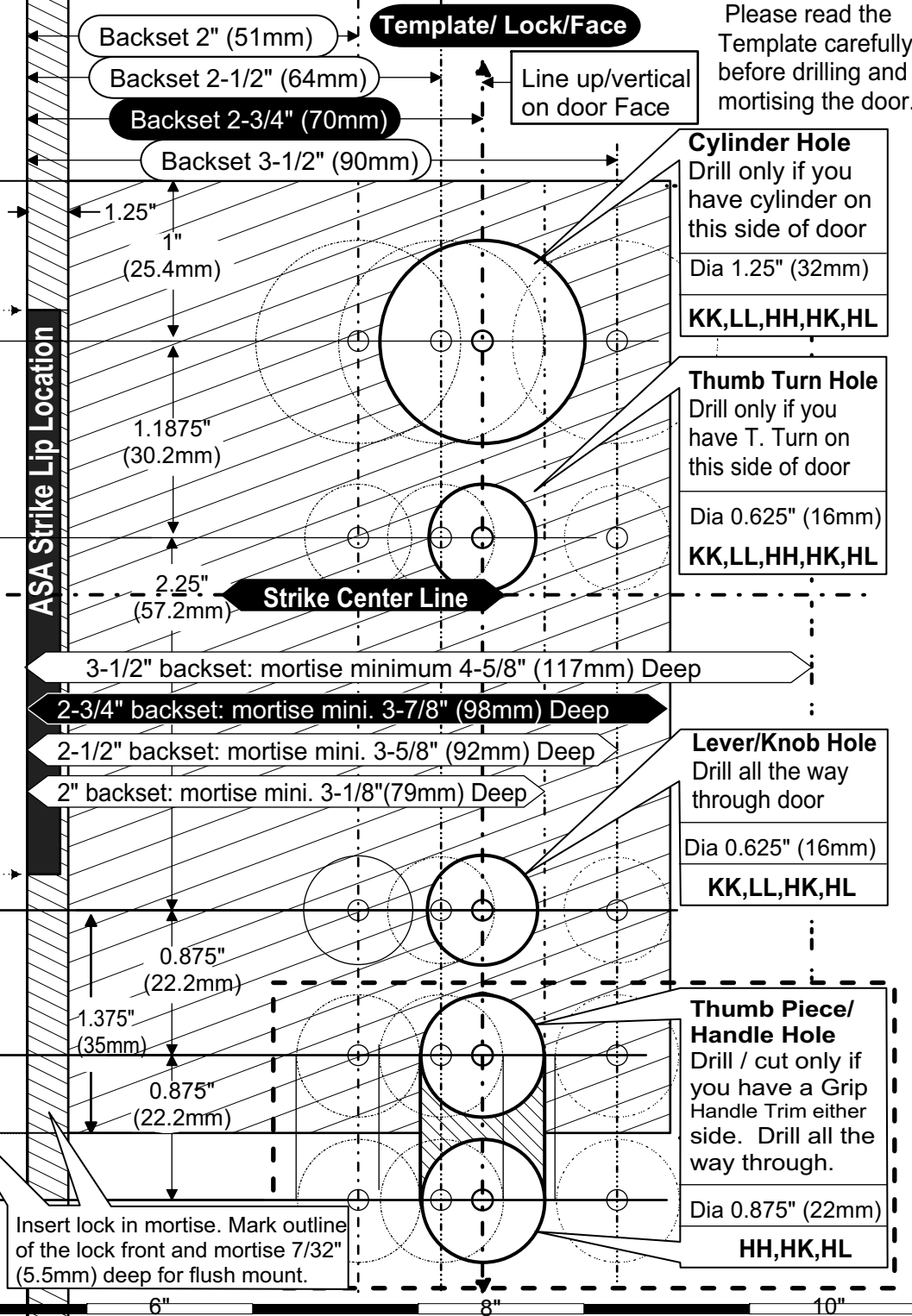
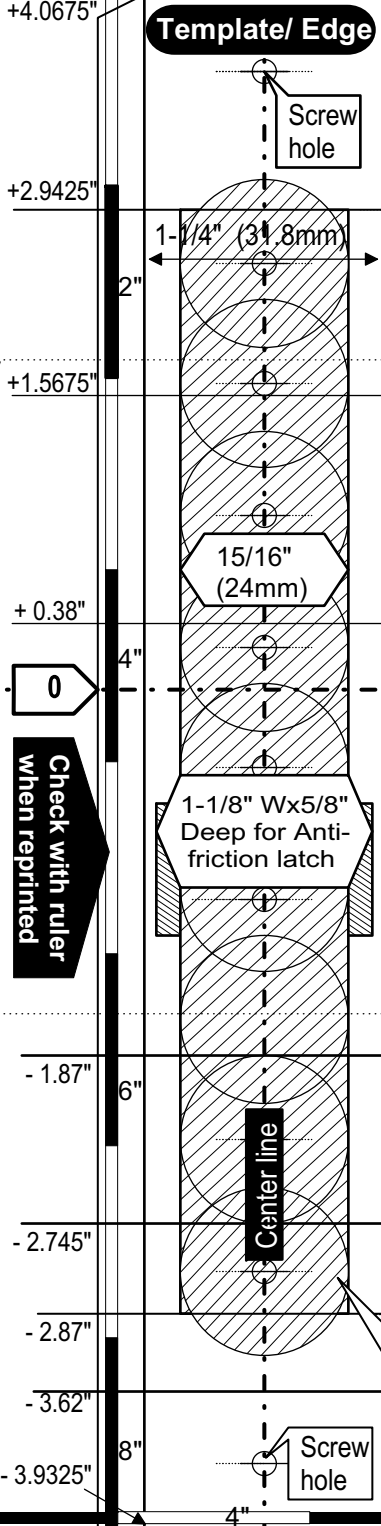
Mark the ASA strike lip location on door frame. Attache the Strike on door frame, center the screw holes, using the the Strike Lip Lines as reference to mark outline of the strike, mortise 2mm deep for flush mount. If door gasketing or silencers are used, proper allowances must be made for strike location to maintain a common centerline with lock and door as shown so that bolt/latch will freely enter strike.



Installation Template
For Series A500, A600,
A700, A900 Mortise Lock
 Template No. A600 - RH



Mark the ASA strike lip location on door frame. Attach the Strike on door frame, center the screw holes, using the the Strike Lip Lines as reference to mark outline of the strike, mortise 2mm deep for flush mount. If door gasketing or silencers are used, proper allowances must be made for strike location to maintain a common centerline with lock and door as shown so that bolt/latch will freely enter strike.



Please read the Template carefully before drilling and mortising the door.